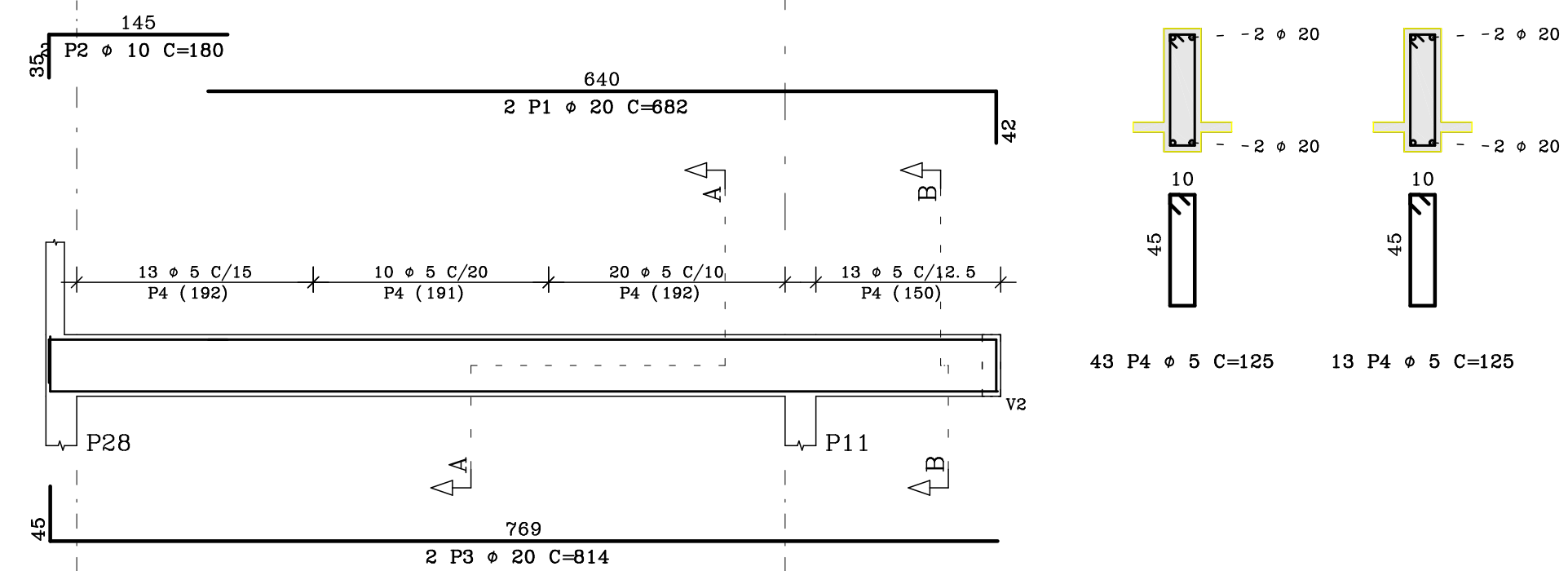
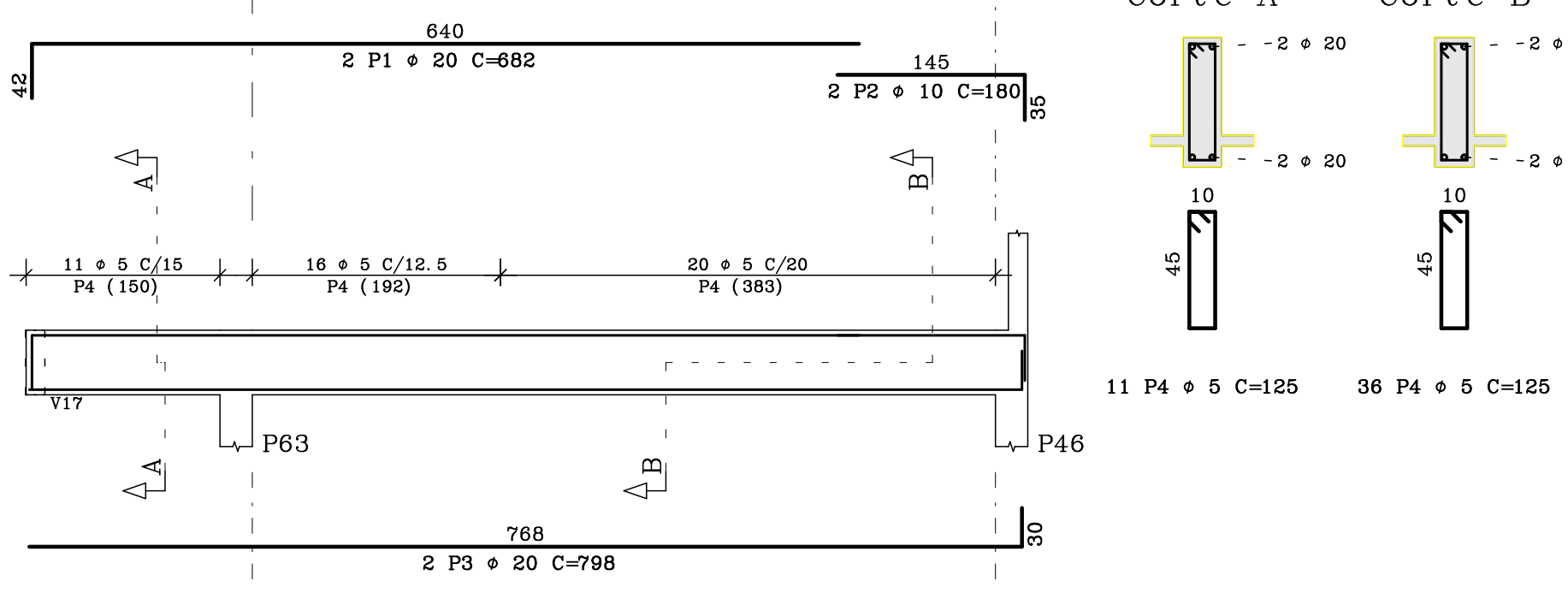


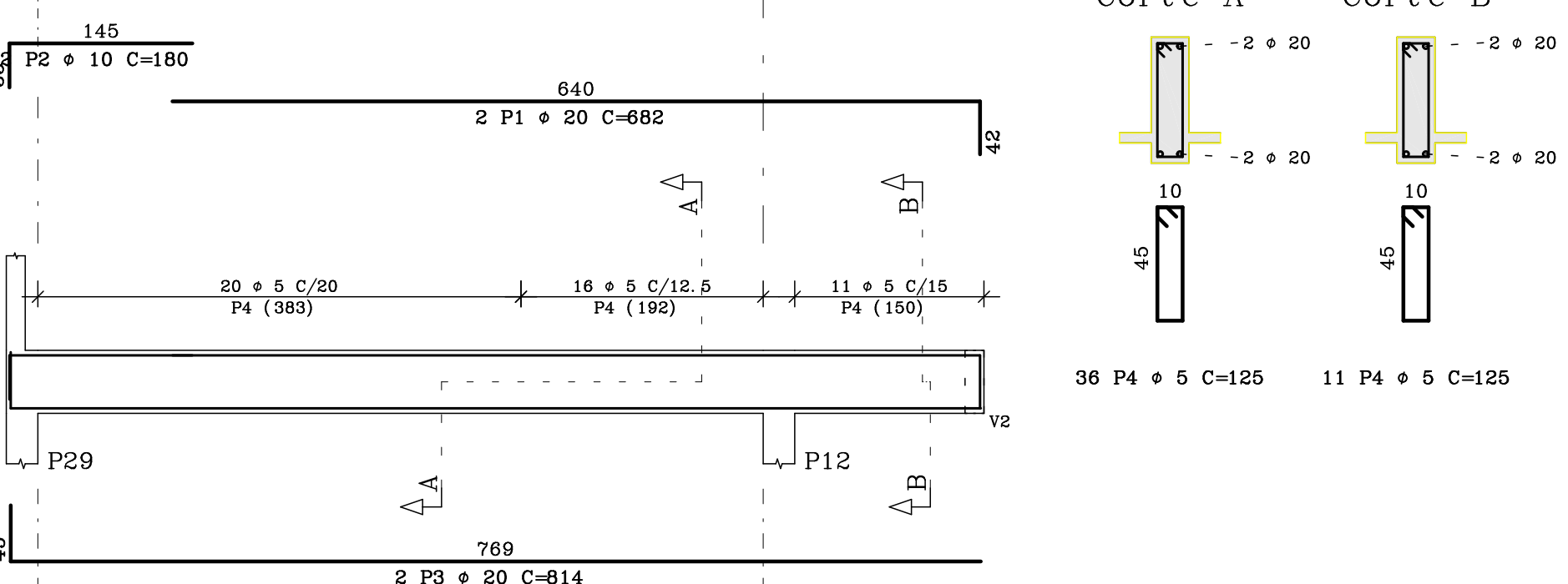
V40 15/50



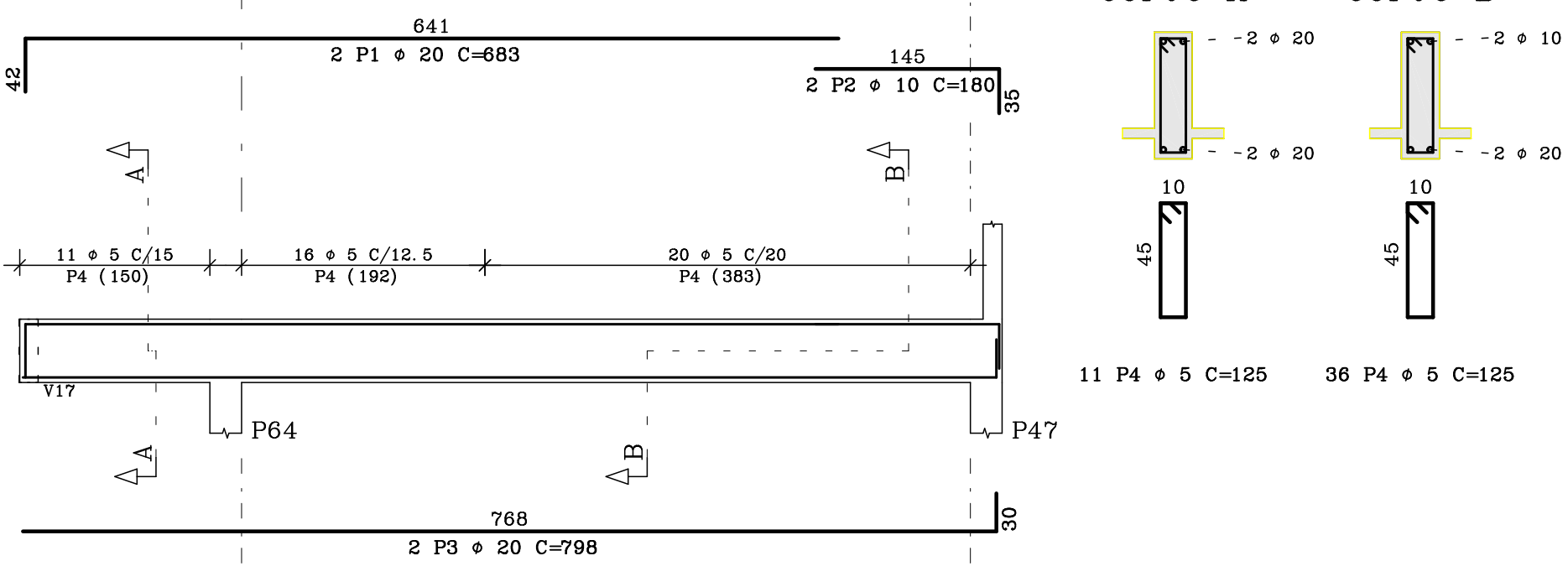
V41 15/50



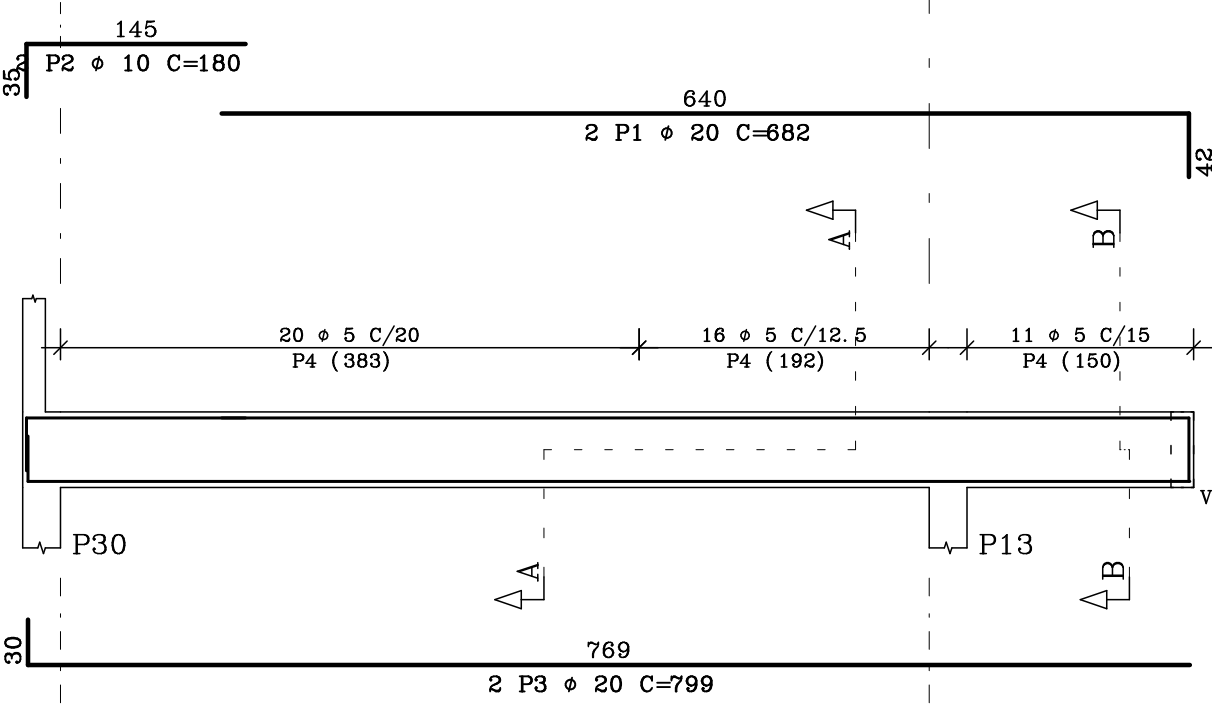
V42 15/50



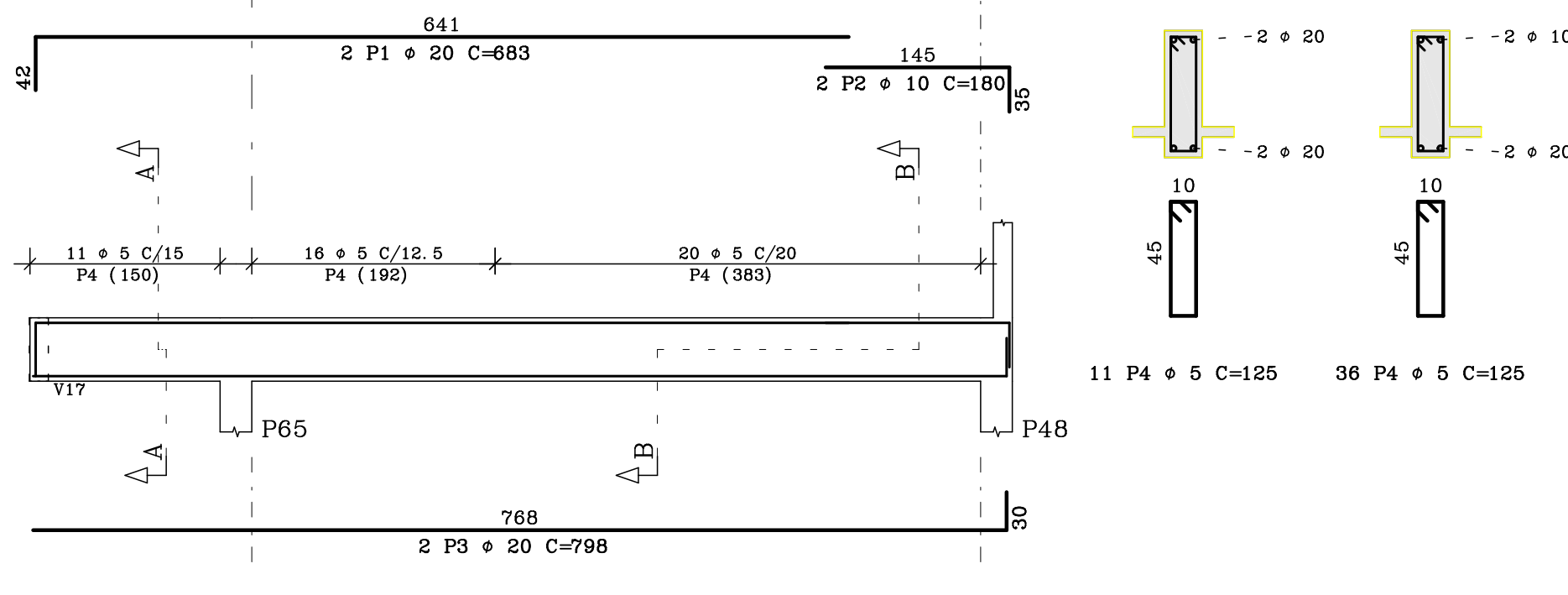
V43 15/50



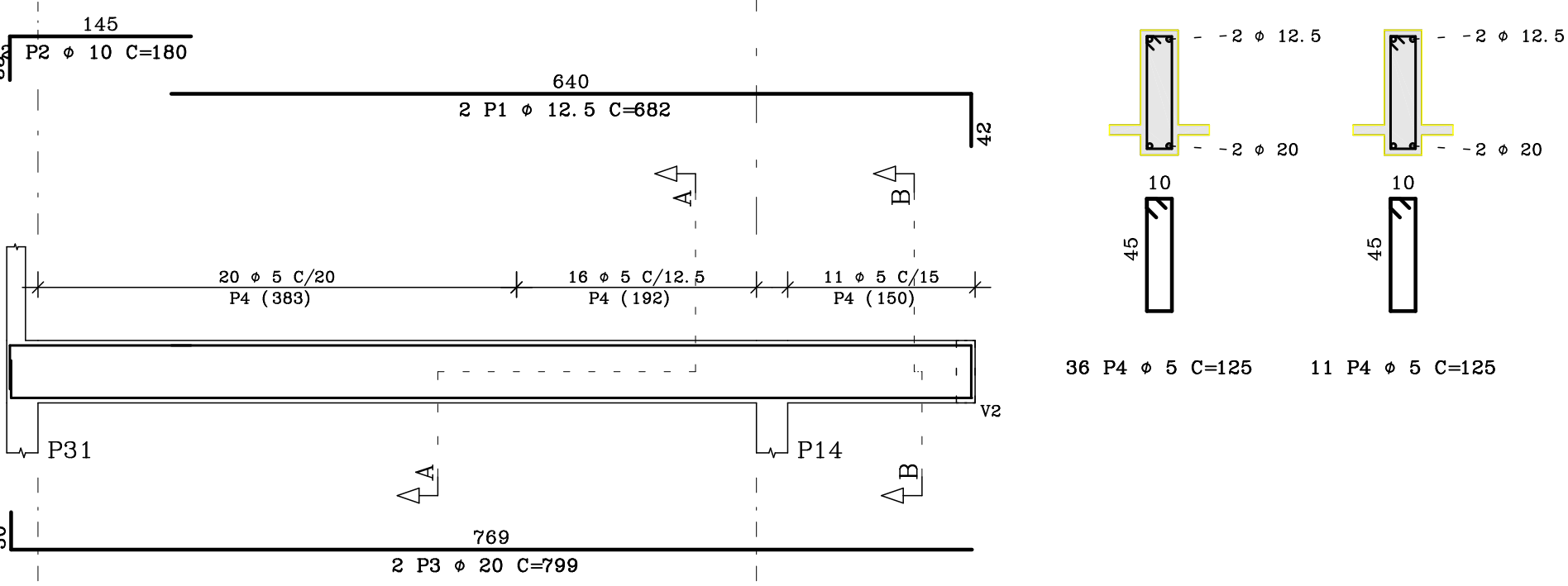
V44 15/50



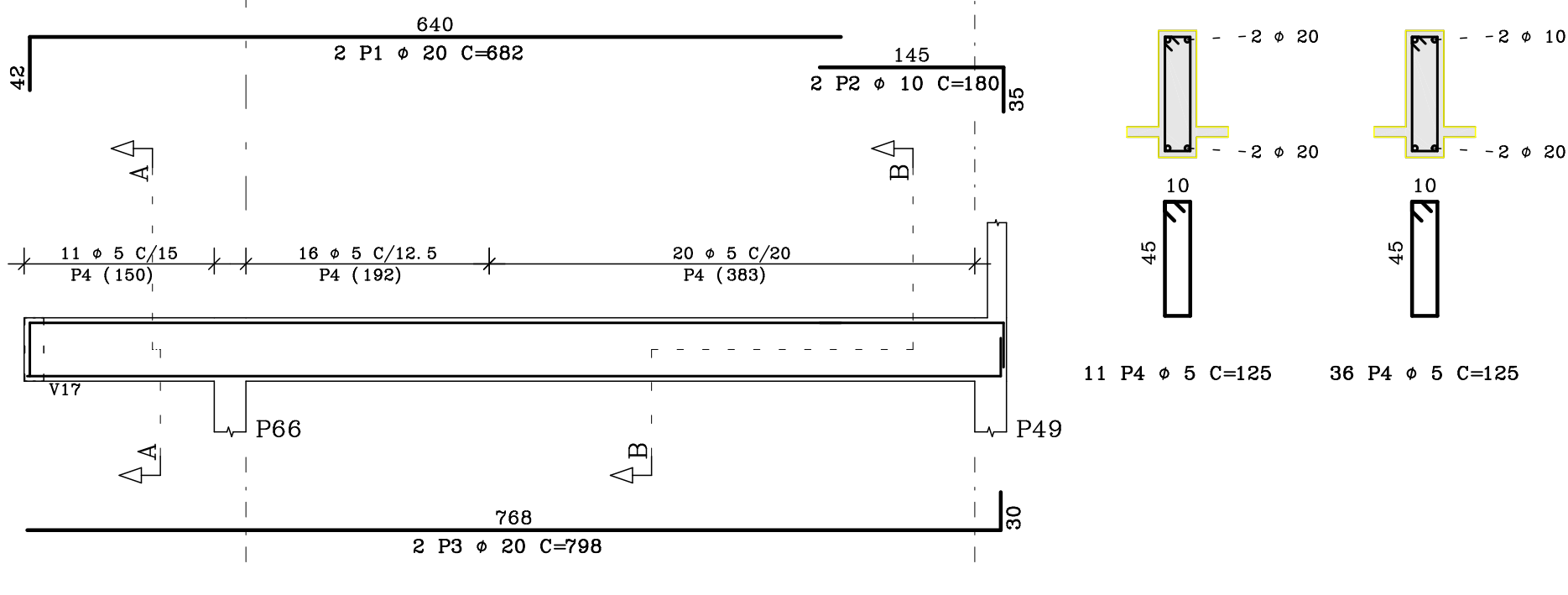
V45 15/50



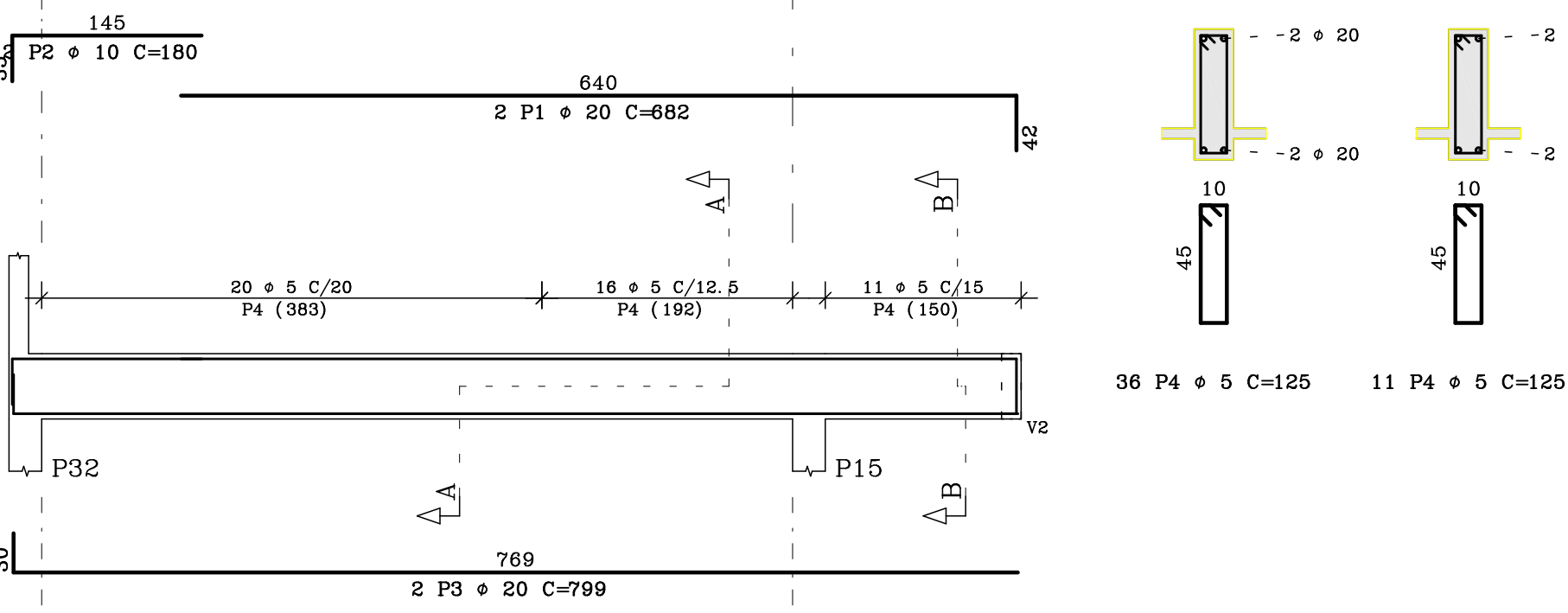
V46 15/50



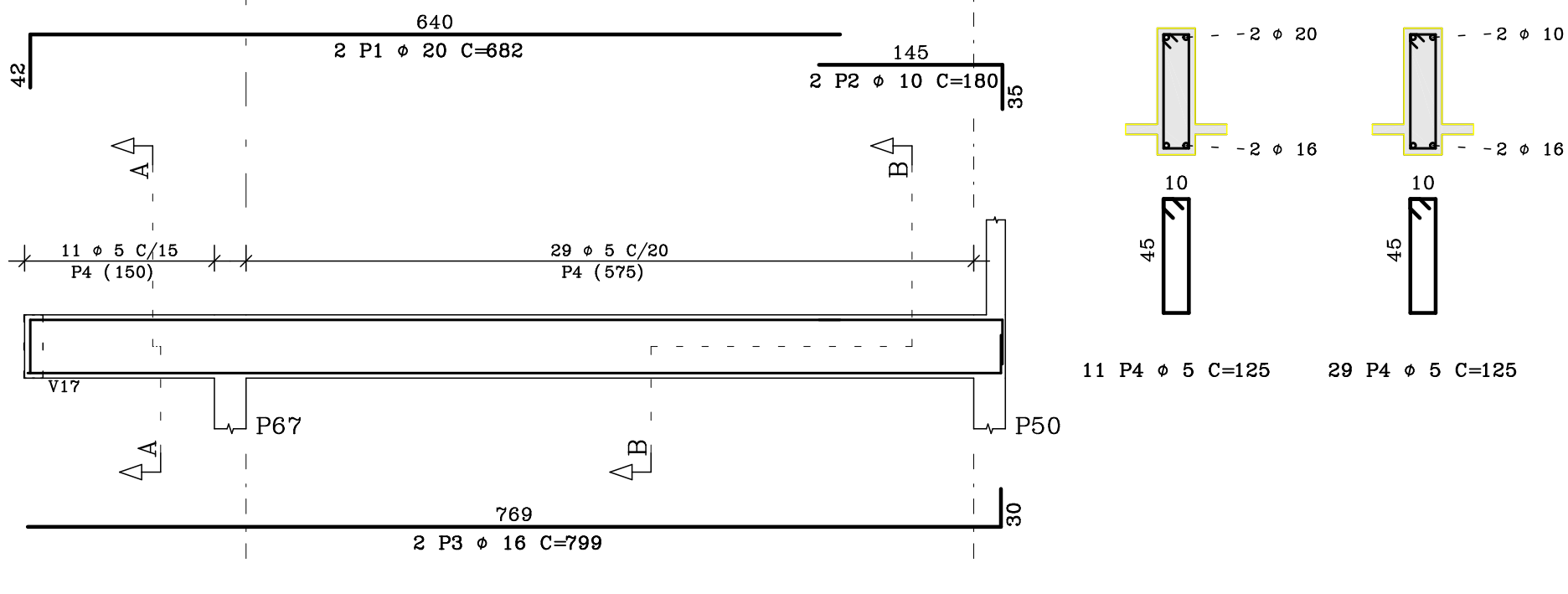
V47 15/50



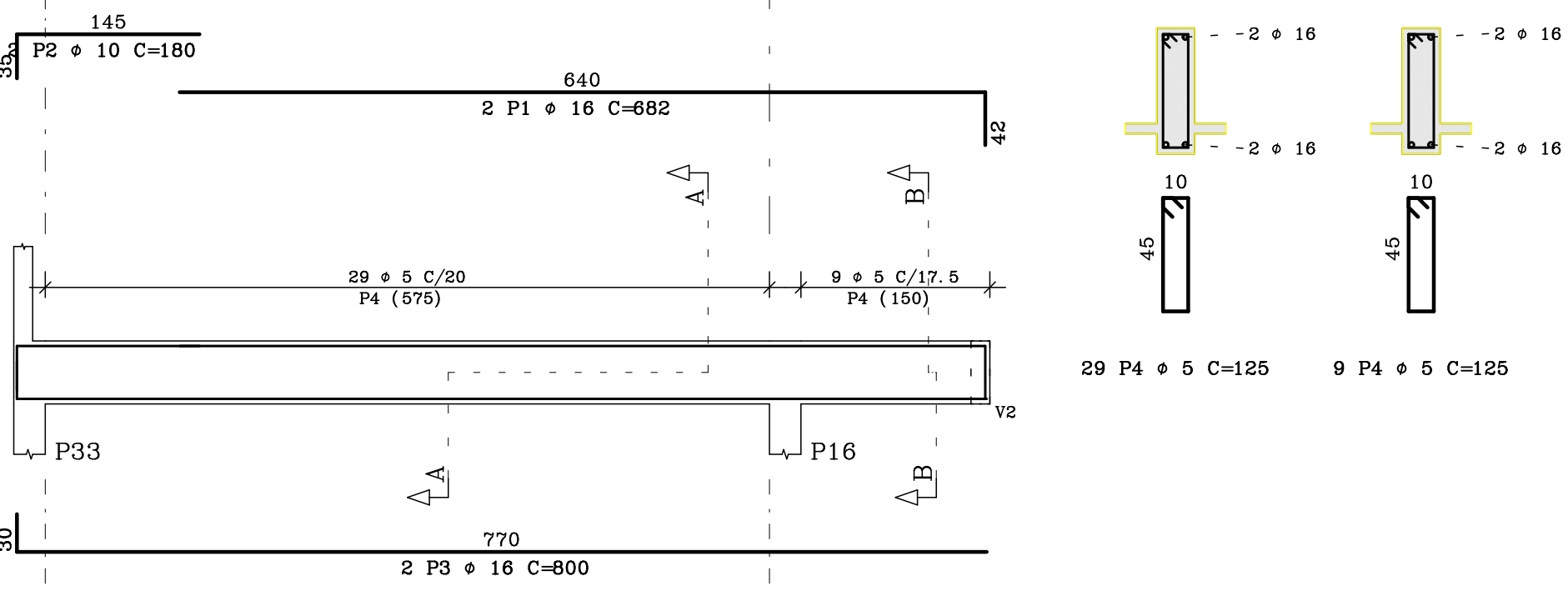
V48 15/50



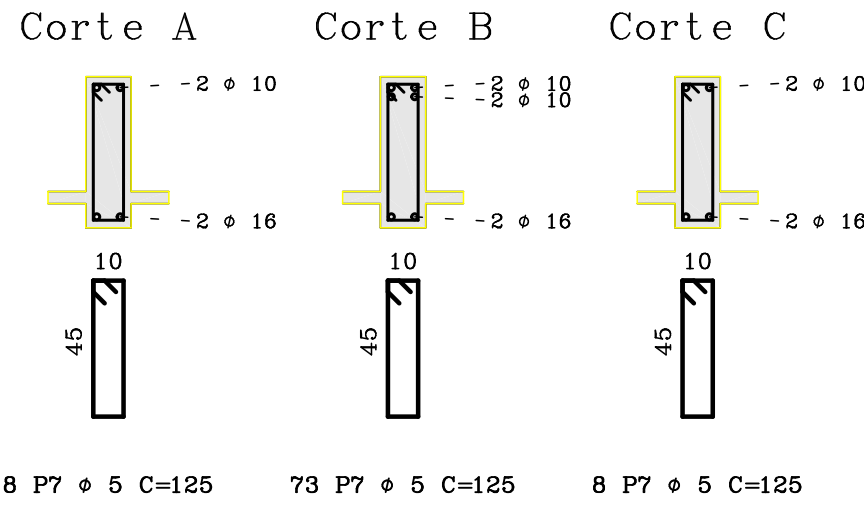
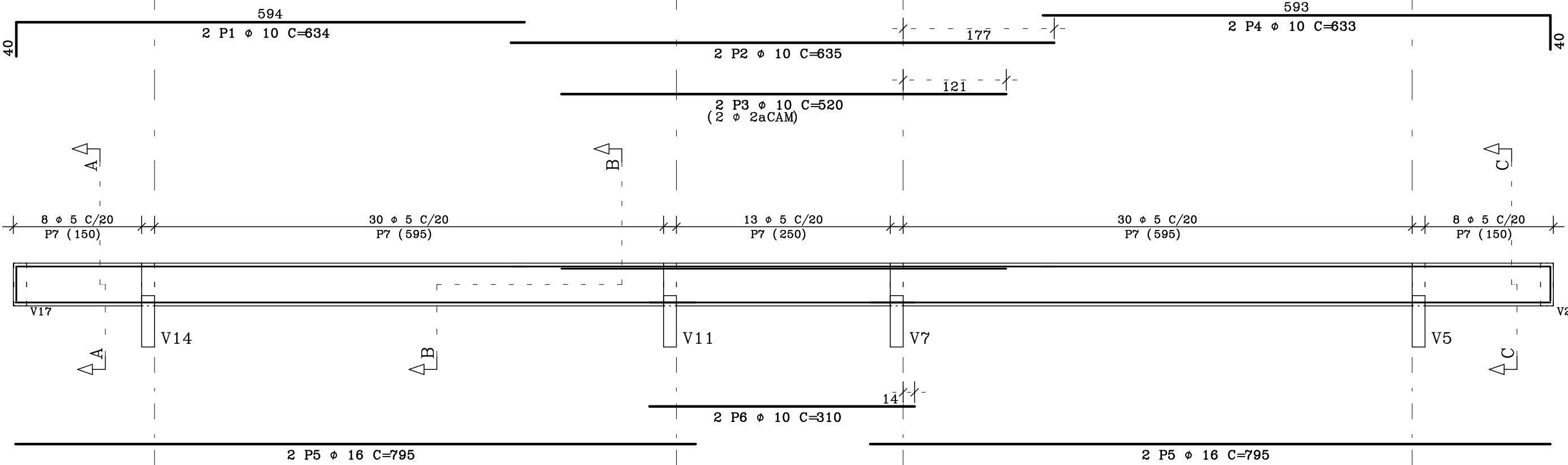
V49 15/50



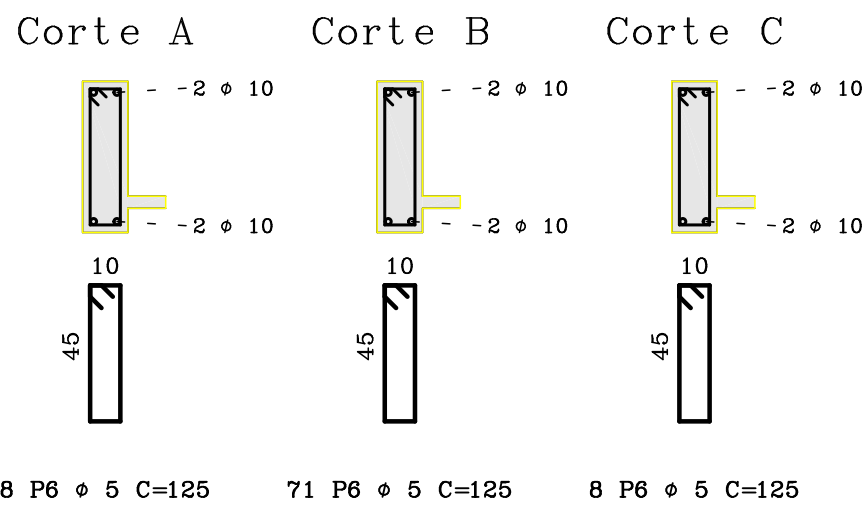
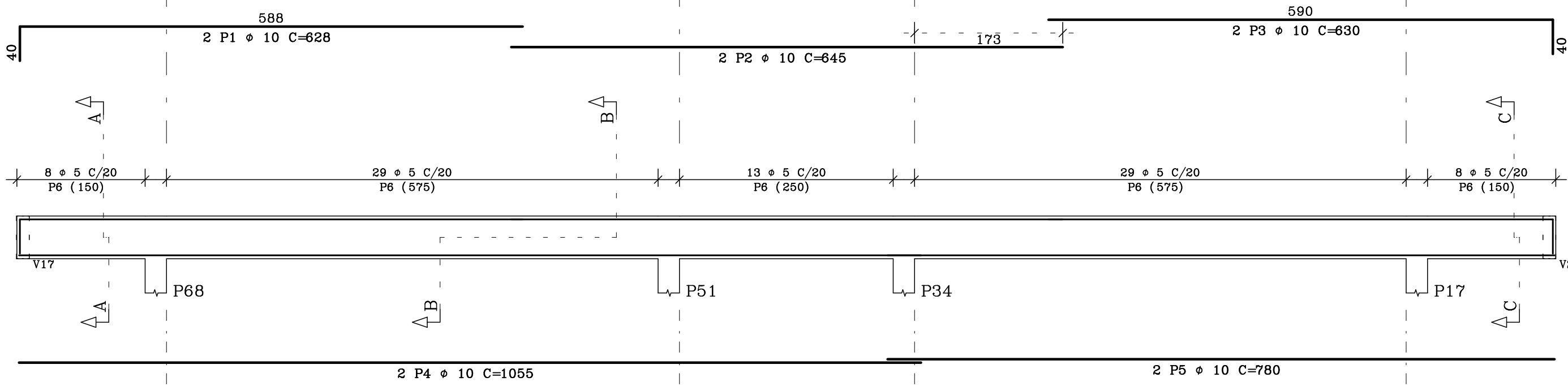
V50 15/50



V51 15/50



V52 15/50



	ACO	POS	BIT (mm)	QUANT	COMPRIMENTO (cm)	UNID	TOTAL (cm)
V40	50A	1	20	2	682	1364	
	50A	2	10	2	180	360	
	50A	3	20	2	814	1628	
	60	4	5	47	125	7000	
V41	50A	1	20	2	682	1364	
	50A	2	10	2	180	360	
	50A	3	20	2	814	1628	
	60	4	5	47	125	5875	
V42	50A	1	20	2	682	1364	
	50A	2	10	2	180	360	
	50A	3	20	2	814	1628	
	60	4	5	47	125	5875	
V43	50A	1	20	2	683	1366	
	50A	2	10	2	180	360	
	50A	3	20	2	799	1598	
	60	4	5	47	125	5875	
V44	50A	1	20	2	682	1364	
	50A	2	10	2	180	360	
	50A	3	20	2	799	1598	
	60	4	5	47	125	5875	
V45	50A	1	20	2	683	1366	
	50A	2	10	2	180	360	
	50A	3	20	2	799	1598	
	60	4	5	47	125	5875	
V46	50A	1	12.5	2	682	1364	
	50A	2	10	2	180	360	
	50A	3	20	2	799	1598	
	60	4	5	47	125	5875	
V47	50A	1	20	2	682	1364	
	50A	2	10	2	180	360	
	50A	3	20	2	799	1598	
	60	4	5	47	125	5875	
V48	50A	1	20	2	682	1364	
	50A	2	10	2	180	360	
	50A	3	16	2	799	1598	
	60	4	5	40	125	5000	
V49	50A	1	16	2	682	1364	
	50A	2	10	2	180	360	
	50A	3	16	2	800	1600	
	60	4	5	38	125	4750	
V50	50A	1	10	2	634	1268	
	50A	2	10	2	635	1270	
	50A	3	16	2	820	1640	
	50A	4	10	2	635	1270	
	50A	5	16	4	795	3180	
	50A	6	10	2	310	620	
	60	7	5	89	125	11125	
V52	50A	1	10	2	628	1256	
	50A	2	10	2	645	1290	
	50A	4	10	2	1055	2110	
	50A	5	10	2	760	1520	
	60	6	5	87	125	10875	

RESUMO				ACO CA	50-60
ACO	BIT (mm)	COMPR (m)	PESO (kg)		
60	5	658	137		
50A	10	189	106		
50A	12.5	14	14		
50A	16	77	184		
50A	20	327	698		
Peso Total				60 =	137 kg
Peso Total				50A =	912 kg

10			
09			
08			
07			
06			
05			
04			
03			
02			
01			
REVISÃO	ALTERAÇÕES	DATA	VISTO
MEDIDAS EM CENTÍMETROS E NÍVEIS EM METROS		VERIFICAR MEDIDAS E NÍVEIS NA OBRA	

PROPRIETÁRIO	
PROJETO	
RESPONSÁVEL PELA OBRA	
OBRA	CLIENTE
UNIVERSIDADE FEDERAL DE ALAGOAS FACULDADE DE MEDICINA – BLOCO ADMINISTRATIVO CAMPUS A. C. SIMÕES – TABULEIRO DOS MARTINS MACRIO- ALAGOAS.	UFAL
ESPÉCIE:	CONCRETO fck ≥ 25 MPa
ARMACÕES DAS VIGAS DA COBERTA	CÁLCULO ENG. CIVIL RAMON LUCIO CREA 020468630-0
DATA 09/10/2014	ESCALA INDICADA
DESENHO RAMON LUCIO	VISTO
CODIGO COD. EMPREEND. ESPECIALIDADE FASE NUM DESENHO QUANT DESENHOS REVISÃO	
F M A - E S T - P E - 0 0 9 / 0 0 0 - 0 0	